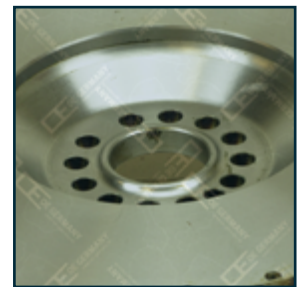
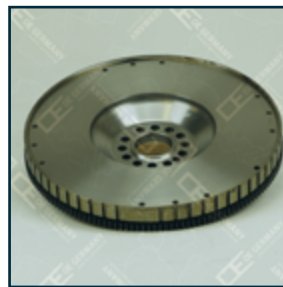
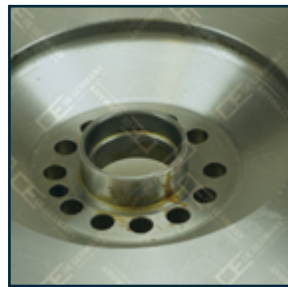
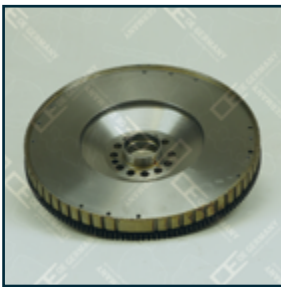
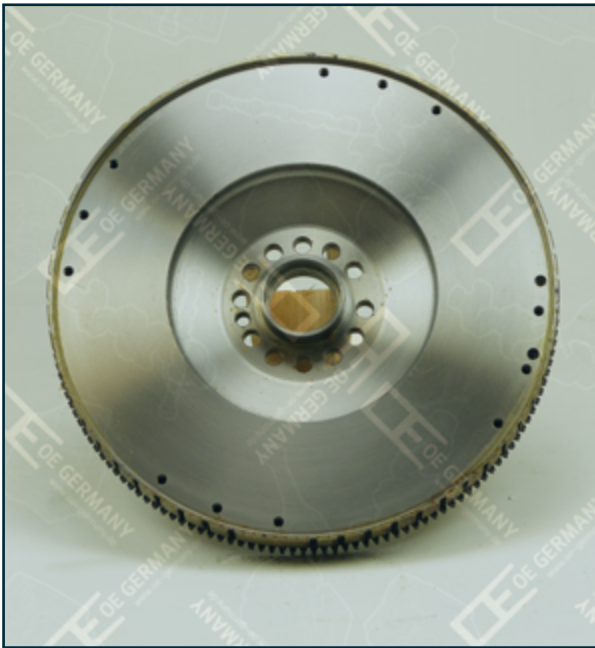


FLYWHEEL / SCHWUNGRAD



03 0330 D1100M

03 0330 D1100A

OEM-No.: 20742684, 21825232, 8148209

Engine Type / Motor Typ: D 11

Details / Bemerkung: for manual gearbox / für manuelles Getriebe
with flange / mit Flansch
outer/außen-Ø 430 mm
inner/innen-Ø 66 mm

Cylinder / Zylinder: R 6

Ø mm: 123

OEM-No.: 20742684, 21825232, 8148209

Engine Type / Motor Typ: D 11

Details / Bemerkung: for automatic gearbox / für automatisches Getriebe
without flange / ohne Flansch
outer/außen-Ø 430 mm
inner/innen-Ø 72 mm

Cylinder / Zylinder: R 6

Ø mm: 123

