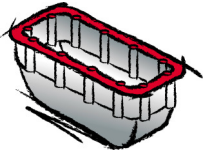
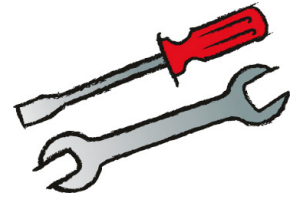


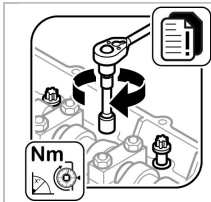


Das Original

TSI 10/11



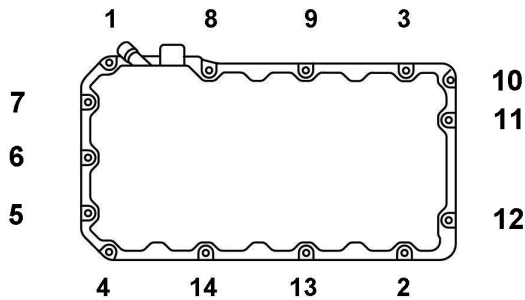
# Mercedes-Benz OM 541.9 | 542.9



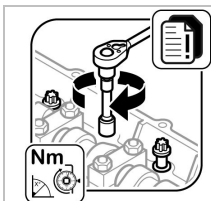
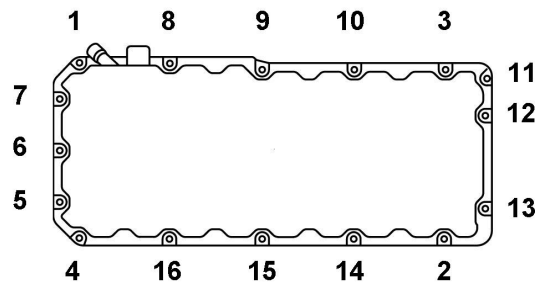
Leichtmetall | Thermoplast

55 Nm

Leichtmetall | Thermoplast OM 541.9:



Leichtmetall OM 542.9:

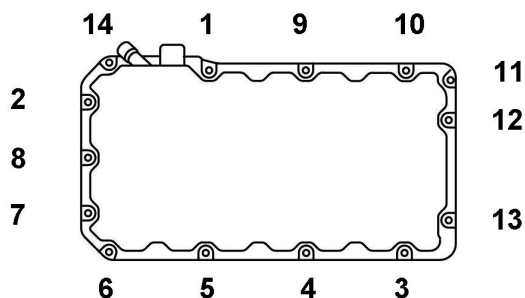


Duroplast

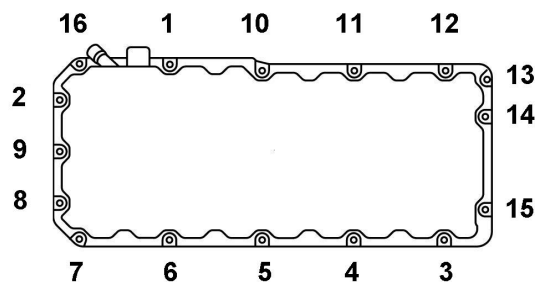
1. Stufe 10 Nm

2. Stufe 40 Nm

Duroplast OM 541.9:

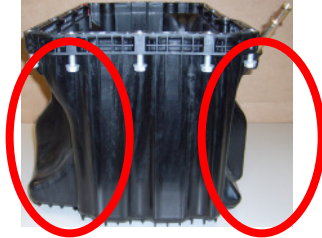


Duroplast OM 542.9:

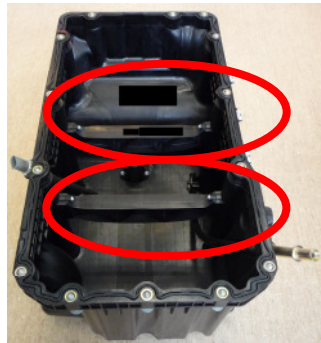


## Thermoplastölwanne

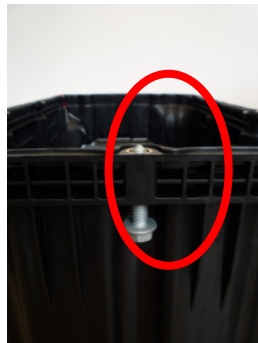
Erkennungsmerkmale:



- Gewölbte Form.



- Versteifungen innen.



- Keine mikroverkapselten Schrauben. Hierdurch wird beim Aus- und Einbau das Nachschneiden der Gewinde im Kurbelgehäuse, im Steuergehäuse und im vorderen Gehäusedeckel verzichtet.
- Keine Erneuerung der Schrauben notwendig.